

OptiBond™ Universal 360

Single Component Universal Adhesive



**All Techniques. Any Material. One Bonding Solution.
The One for All.**

Meet OptiBond Universal 360, the revolutionary new bonding agent that offers the best outcome to every clinician, regardless of what materials they use or which techniques they follow. No matter what your goals are, OptiBond Universal 360 can help your dental practice meet them with ease.

Kerr™

With OptiBond Universal 360, you can simplify the bonding process. Here's what you can expect if you add it to your dental practice.



Improved Bottle Delivery

Thanks to the all new ergonomic bottle design, you'll only need one hand for opening, dispensing, and closing. Plus, you can use the dropper to deliver a precise drop size at every application, without worrying about leakage before and after. This leads to less waste and more efficiency.



Exceptional Bond Strength

OptiBond Universal 360 offers equal or superior bond strength results in combination with Kerr and leading competitor cements, even in total dark cure mode, without auxiliary products.



Easy Storage

Store OptiBond Universal 360 at an ambient temperature. Unlike other bonding agents, it doesn't require refrigeration.

TRULY UNIVERSAL

thanks to the combination of both monomers



GPDM



MDP



ADVANTAGE OF COMBINATION

PROPERTY

Acidity

Lower pH.

Higher pH.

Hydrophilicity/ Hydrophobicity

More hydrophilic.

More hydrophobic.

Adhesion anchoring group

Adhesion via phosphate group.

Adhesion via phosphate group.

Crosslinking to resin

Two functional groups for crosslinking to resin.

One functional group for crosslinking to resin.

OptiBond Universal 360

Adhesive formula with optimized hydrophilicity-hydrophobicity and pH, for wider range of substrate compatibility and convenient storage requirement.



Universal, Multi-Purpose Solution

Powered by Kerr's patented GPDM technology, now enriched with MDP, OptiBond Universal 360 is a truly universal system offering reliable bond strength to all surfaces and substrates, with any resin cement, even in the absence of light. This one-bottle solution offers the flexibility to be used with any etching technique in both direct and indirect restorations.



Three Solvents in One

Kerr's patented Ternary Solvent System technology and optimal hydrophobicity and hydrophilicity balance allow OptiBond Universal 360 to deliver excellent penetration into dentinal tubules, giving you extraordinary bond strength and protection against microleakage and post-op sensitivity.



Ternary Solvent System

WATER

enhances the etching power and re-wetting ability, facilitating penetration of the adhesive into dentinal tubules.

ACETONE

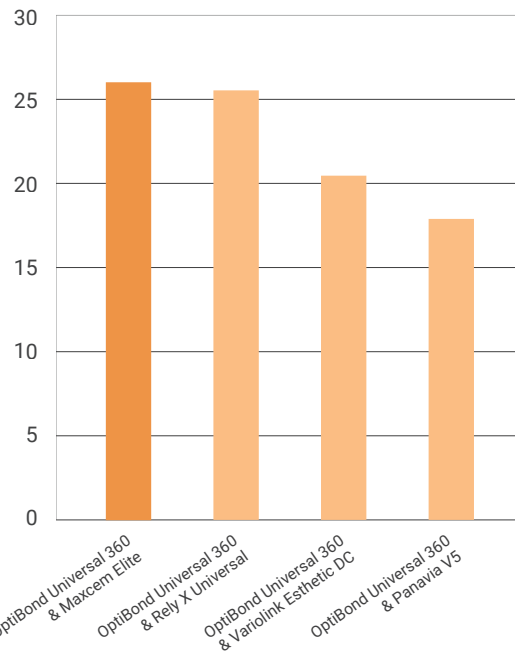
enhances shelf-life stability and increases the acidity and etching during application due to its quick evaporation.

ETHANOL

facilitates the formation of a homogeneous adhesive layer, resulting in a less technique-sensitive application.

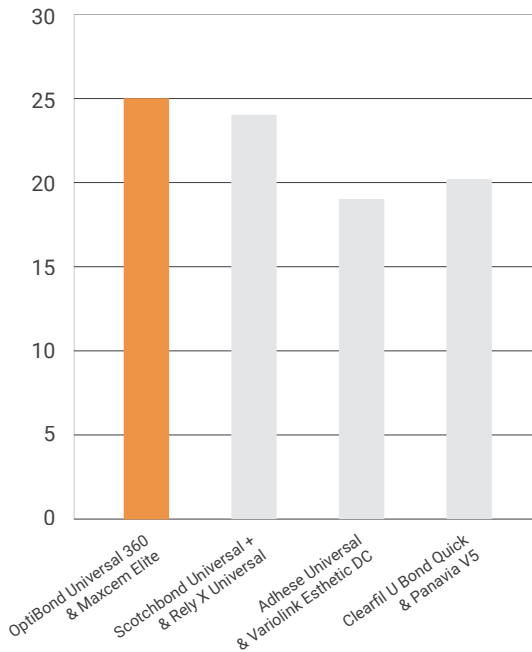
OptiBond Universal 360 - Goes with anything.

Indirect Bond Strength to Dentin
OptiBond Universal 360 with different cements



Dr. Sibel Antonson | NOVA Southeastern University | In-vitro study
Adhesive: light cured | Cement: Dark cured

Indirect Bond Strength to Dentin
OptiBond Universal 360 / Maxcem Elite compared to other adhesive/cement combinations

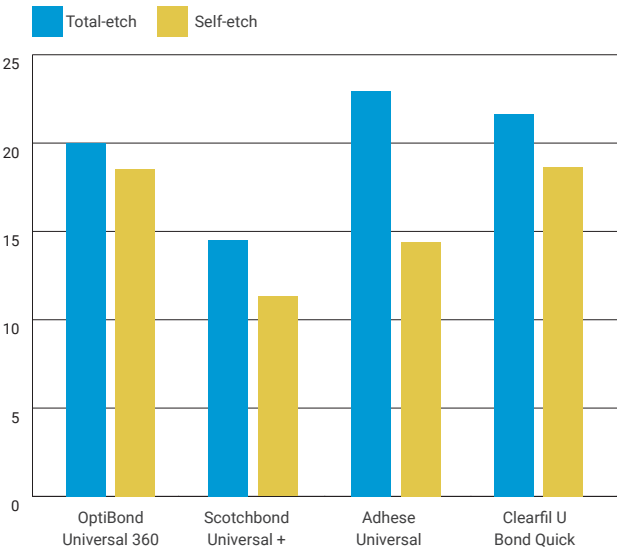


An in-vitro study conducted by Dr. Sibel Antonson at NOVA Southeastern University demonstrated that OptiBond Universal 360 outperforms or matches competitors in shear bond strength (SBS).

When combined with Maxcem Elite, its SBS equals or surpasses competitive adhesive/cement combinations.

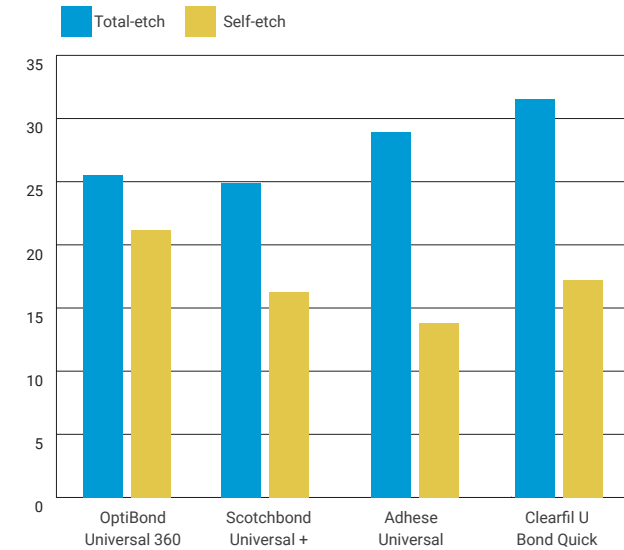
Additionally, OptiBond Universal 360 shows superior or equal SBS compared to competitors when bonded to dentin and enamel in both total-etch and self-etch modes, offering excellent performance for direct and indirect restorations.

Shear Bond Strengths of Universal Adhesives to Dentin

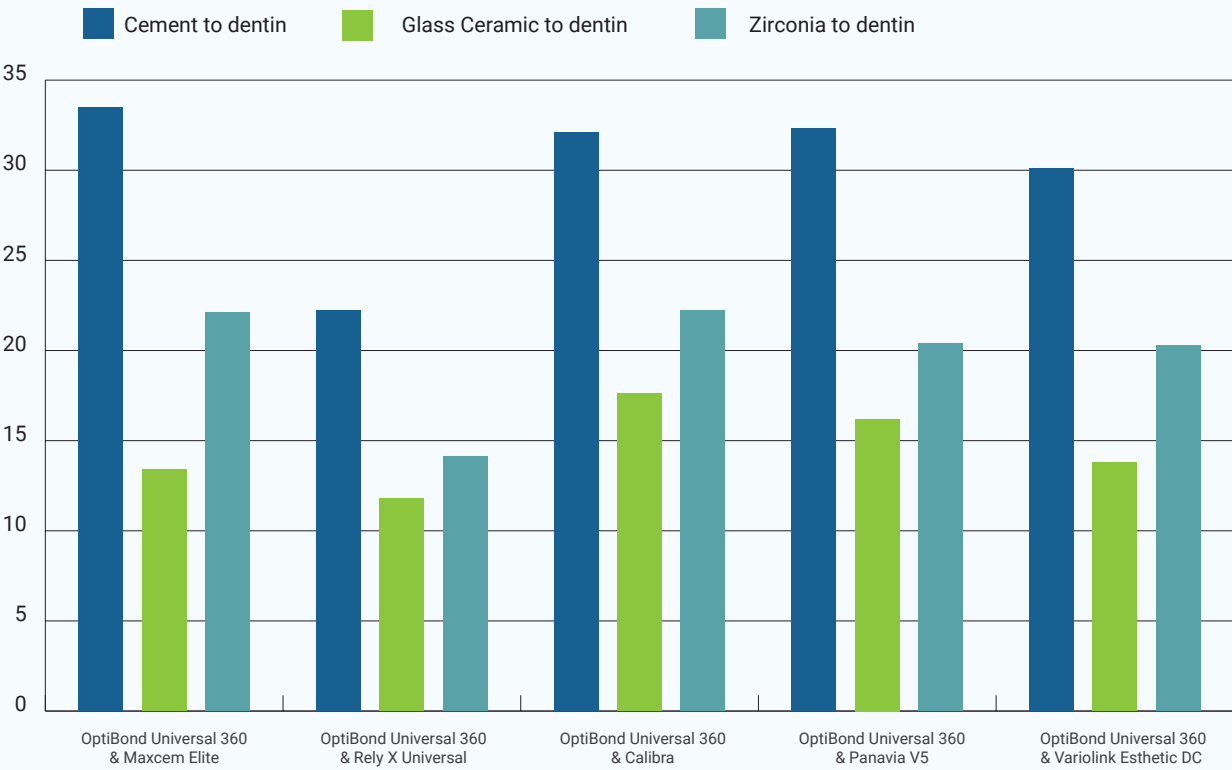


Dr. Sibel Antonson | NOVA Southeastern University | In-vitro study - Adhesive: light cured | Composite Herculite XRV: light cured

Shear Bond Strengths of Universal Adhesives to Enamel



Study results clearly show high bond strength using OptiBond Universal 360 with Maxcem Elite and other leading cements, on various substrates, such as Glass Ceramic or Zirconia.



Mark A. Latta, D.M.D., M.S., Dean and Professor | Creighton University |
In-vitro-Evaluation of shear bond strength to dentin, of five cement systems using Optibond Universal 360

Additional internal testings show, OptiBond Universal 360 delivers exceptional bond strength to various dental substrates, including zirconia, gold, base metal alloys, alumina, lithium disilicate (e.max), titanium, PFM, and PFZ, with no need for a separate ceramic or metal primer.

Data available on request



Esthetic Restorations

OptiBond Universal 360 uses a less yellow formulation than leading competitive bonding agents, offering more esthetic results.

98%

of dentists agree that their patients did not have any post-operative sensitivity.



Rating «Excellent»

OptiBond Universal 360 received an impressive 96% clinical rating («Excellent») from Dental Advisor, with 45 evaluators and 1,349 clinical uses.

Praised for its innovative GPDM technology with MDP, it bonds seamlessly to all surfaces. Users highlighted its excellent viscosity, the option of dark curing and precise application features.

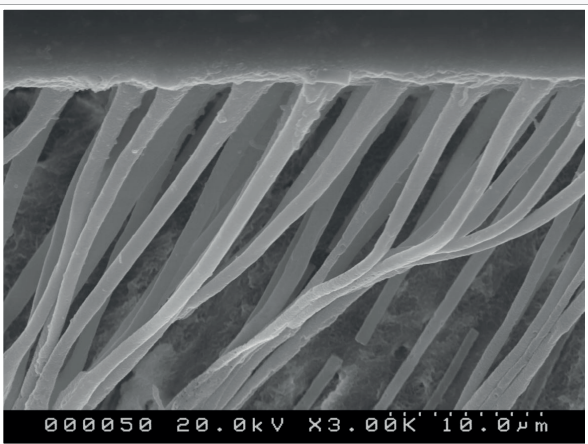
The Ternary Solvent System ensures strong dentinal penetration, low film thickness, and reduced post-op sensitivity for superior restoration fitting.



For more details visit <https://dentaladvisor.com>

Minimal Post-Op Sensitivity

OptiBond Universal 360 ensures optimal tooth penetration to prime and seal dentin, helping you reduce post-op sensitivity risk and increasing patient satisfaction.



Simple Application

It couldn't be easier or more convenient to apply OptiBond Universal 360. This advanced formula combines etching, priming, and bonding in just one bottle.

It's effective with as little as one coat, without auxiliary products, even in total dark cure mode. You can count on it to save you time and money on inventory.

Improved dark cure capabilities

OptiBond Universal 360 optimizes the balance between hydrophilicity and hydrophobicity in its formula to prevent phase separation at the adhesive and resin cement interface. This results in improved complete polymerization, even in total dark cure mode.



In combination with Maxcem Elite™ Universal even stronger

The combined use of OptiBond Universal 360 and Maxcem Elite enhances the bond strength of the cement. Unlike other resin cements, Maxcem Elite does not contain basic amine moieties that inhibit the polymerization process. Consequently, the cement's polymerization (curing) remains unaffected when it comes into contact with the acidic adhesive layer.



Revolutionize your practice with a true one-bottle solution



Ordering Information

Part #	Item Description
36820	OptiBond Universal 360 - Bottle Kit Content: 1x OptiBond Universal 360 bottle 5ml, 1x Gel Etchant 3g syringe, 25x disposable mixing wells, 100x disposable applicator tips, technique guide.
36821	OptiBond Universal 360 - Unidose Kit Content: 100x OptiBond Universal 360 unidose applications 0.18 ml, 1x Gel Etchant 3g syringe, 100x disposable applicators, technique guide.
36822	OptiBond Universal 360 - Bottle Refill Content: 1x OptiBond Universal 360 bottle 5ml



For more information, visit
to.kerrdental.com/optibond360