

PART OF A



# THE PERFECT PARTNER FOR YOUR FILE? CHALLENGE ACCEPTED.



## X-Smart® Pro+

Endo Motor with Integrated Apex Locator

**Shaping** • **Cleaning** • **Obturation**



With up to 7.5 N·cm and 3,000 rpm, the X-Smart Pro+ endo motor **optimizes performance of Dentsply Sirona's endodontic file systems** in both **continuous rotation** and **reciprocating modes**.

Our **integrated apex locator** gives you confidence for an **accurate shaping experience**. And the **touchscreen interface** provides easy access to ideal settings for the files you choose, with **upgradeable firmware** to accommodate tomorrow's treatments.



# BETTER TOGETHER.

Dentsply Sirona's endo file systems **perform significantly better\*** when paired with the X-Smart<sup>®</sup> Pro+ motor.

## RECIPROC<sup>®</sup> family



## VDW.ROTATE<sup>®</sup>



## WaveOne<sup>®</sup> Gold



## ProTaper Ultimate<sup>™</sup>



## TruNatomy<sup>®</sup>



**GENUINE  
RECIPROCATING  
MOTION**

**Fine-tuned reciprocating motion** for WaveOne<sup>®</sup> Gold and RECIPROC<sup>®</sup> family of files, with precise angulation, acceleration and speed for simplicity, safety and reliability.



**ABUNDANT  
POWER**

**Dedicated power and torque** for optimal performance across a full range of anatomies with ProTaper Ultimate<sup>™</sup> and VDW.ROTATE<sup>®</sup> files.



**PRECISE SPEED  
CONTROL AT  
LOW TORQUE**

**Constant, stable speed control at low torque** for improved procedural control with TruNatomy<sup>®</sup> files, supporting structural dentin preservation.

\*Compared to most leading competitive motors using ProTaper Ultimate<sup>™</sup> and WaveOne<sup>®</sup> Gold files. Internal data on file. For more information, contact Consumables-Data-Requests@dentsplysirona.com



### PATENTED BRUSHLESS DC MOTOR CONTROL

Unlike the periodic feedback of brush and sensor-based motor control, X-Smart® Pro+ features a patented sensorless system for 360° speed and torque feedback, enabling quicker reaction times for stable file settings.



In **reciprocating** motion, the X-Smart® Pro+ reaches the apex

**21% faster\***



In **rotary** motion, the X-Smart® Pro+ reaches the apex

**14% faster\***

# RESPONSIVE CONTROL.

A quality file matters.  
Wouldn't a quality motor matter too?

Our patented brushless DC motor control **responds to torque loads faster than competitors.\*** Stabilizing the motion ensures optimal file performance.

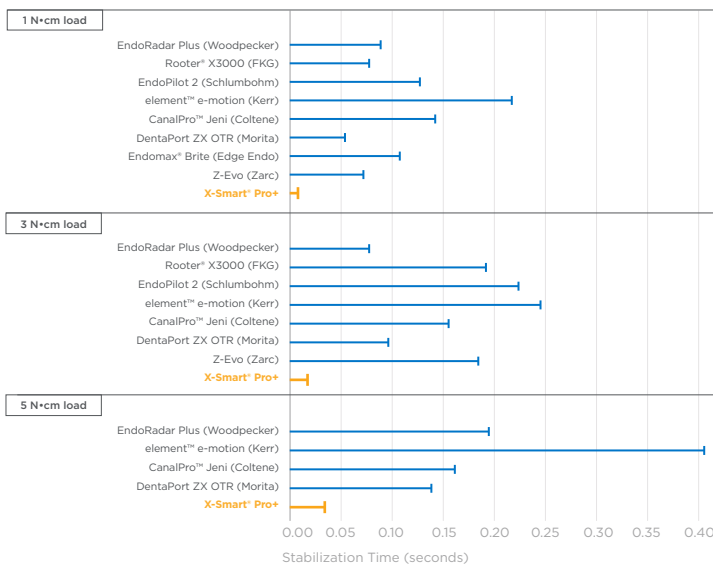


"We always talk about the file, but the motor is very important. It needs to respond to the different challenges with a rapid stabilization time for the file to constantly perform at its best."

Dr. Sarah Attal, DDS, Endodontist  
DS Endo KOL

**During lab testing, 37.5% of competitors tested using a reciprocating motion encountered ledging, fracture or unwinding.\***

TIME TO FILE STABILIZATION WHILE UNDER TORQUE LOAD



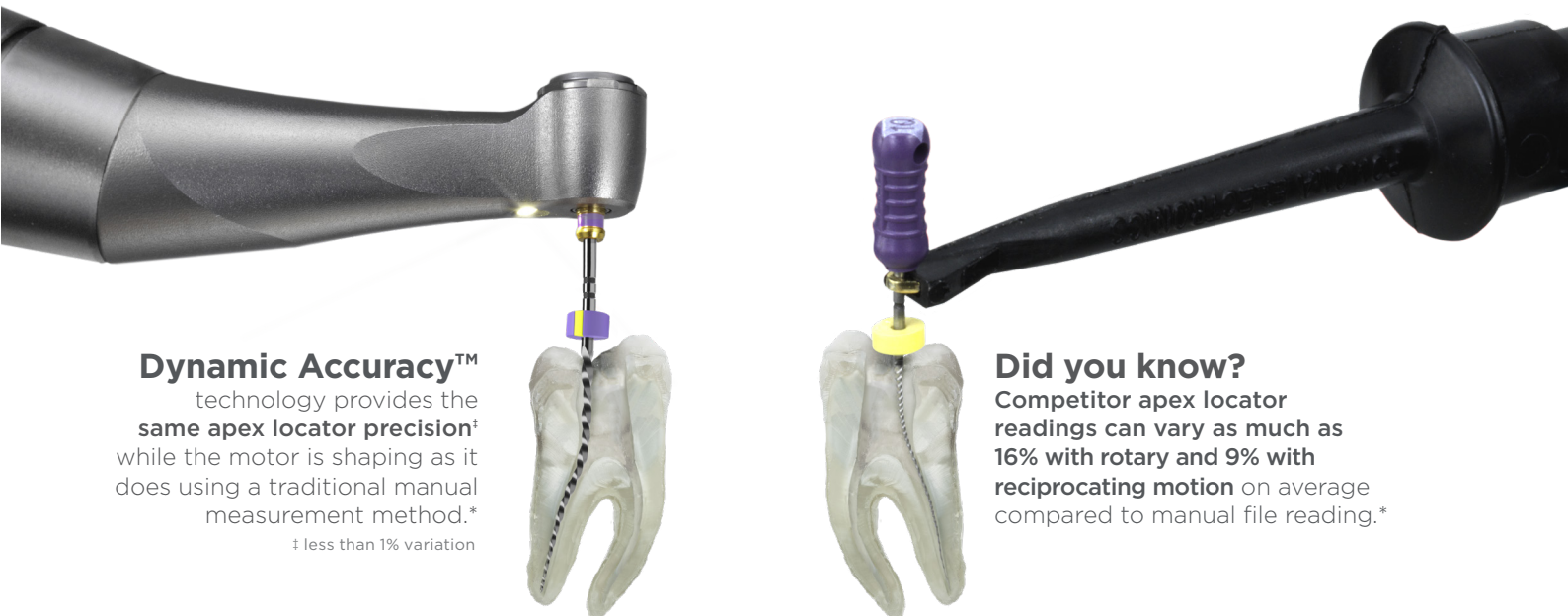
\* Internal data on file. For more information, contact Consumables-Data-Requests@dentsplyirona.com



When shaping canals, you want to reach the apex precisely, as efficiently and safely as possible.

Our **Dynamic Accuracy™** technology allows for **direct length determination while actively shaping**, with auto-reverse function to keep your file on your desired target.

# EFFICIENT PRECISION.



**Dynamic Accuracy™** technology provides the **same apex locator precision†** while the motor is shaping as it does using a traditional manual measurement method.\*  
 † less than 1% variation

**Did you know?** Competitor apex locator readings can vary as much as **16% with rotary and 9% with reciprocating motion** on average compared to manual file reading.\*



“The X-Smart® Pro+ with integrated apex locator helps me organize my table and simplify my workflow. And when I pair it with my preferred sequence, ProTaper Ultimate™, I can use the slider for the initial route, canal scouting, gaining working length, and creating a glide path. It is the optimal setup.”

Dr. Laura Andriukaitiene, DDS, Endodontist  
 DS Endo KOL

\* Internal data on file. For more information, contact Consumables-Data-Requests@dentsplysirona.com

10.59 mm  
Integrated  
10-lumen LED

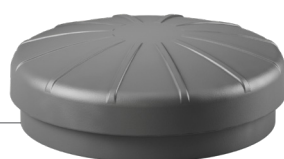
### SUPERIOR VISIBILITY AND ACCESS

Locate and enter root canal with confidence  
Easy treatment of patients with limited mouth opening\*

360° adjustable position

### USER-FRIENDLY TOUCHSCREEN INTERFACE

Large, easy-to-clean screen  
Easy navigation with gloved hand  
Up to 30 customizable file sequences with upgradable firmware to accommodate future file systems  
Bluetooth® foot switch (optional)



# COMPLETE FOCUS.

The X-Smart® Pro+ Endo Motor keeps you **focused on the procedure, not on the tools.** A streamlined workflow helps you do your best work.

### ERGONOMIC DESIGN

Battery power to support a full day of work  
Portable convenience with the power and functions of a tabletop unit  
Drag and drop magnetic holder for enhanced comfort, reduced fatigue



### REMOVABLE/AUTOCLAVABLE HANDPIECE METAL SHEATH

Comply with the latest infection control guidelines  
Reduces waste, making handpiece barrier sleeves obsolete



\* Compared to contra-angles with larger head height

# Technical Specifications






- Reciprocating and rotary motions
- Includes file library with preset programs for WaveOne® Gold, ProTaper Ultimate™, TruNatomy®, RECIPROC® family, and VDW.ROTATE® endodontic file systems
- Customizable file sequences, compatible with other endodontic files and instruments
- Auto-reverse rotation at preset torque limit and at doctor's desired working length
- On/Off button on the motor handpiece or optional wireless footswitch
- Calibration function (CAL) for precise torque setting
- 7" touchscreen interface
- Mini contra-angle with integrated 10-Lumen LED
- 360° adjustable position
- Lithium-ion battery
- Autonomous operation through a full day of work\*
- Fully recharged in only 1.5 hour
- Motor can be run on battery only or can be recharged during treatment
- Universal charger (voltage 110–240, 50/60 Hz)
- Torque range: 0.2 N·cm – 7.5 N·cm
- Speed range: 100 rpm – 3,000 rpm
- Fully autoclavable handpiece sheath and contra-angle
- Upgradeable via Wi-Fi

\* 10 treatments of 2 canals with 4 files per canal

## Product Reference

X-SMART® PRO+/PRO MOTOR	
	<p><b>6779016 X-Smart® Pro+ Endo Motor with Integrated Apex Locator</b></p> <p>X-Smart® Pro+ Endo Motor with Integrated Apex Locator, Mini Contra Angle with Integrated LED, 360° Adjustable Position Stainless Steel Handpiece Sheath, Magnetic Handpiece Holder, Accessories Box (charger with universal power adapters), Lip Clip, File Clip, Y-Connector Cable</p>
	<p><b>6779008 X-Smart® Pro Endo Motor</b></p> <p>X-Smart® Pro Endo Motor only, Mini Contra Angle with Integrated LED, 360° Adjustable Position Stainless Steel Handpiece Sheath, Magnetic Handpiece Holder, Accessories Box (Charger with universal power adapters)</p>

ACCESSORIES	
<b>6794536</b>	X-Smart Pro+/Pro 5:1 contra-angle
<b>6793462</b>	X-Smart Pro+/Pro 5:1 contra-angle + handpiece sheath
<b>6752401</b>	X-Smart Pro+/Pro handpiece
<b>6793439</b>	X-Smart Pro+/Pro handpiece sheath
<b>6770601</b>	X-Smart Pro+/Pro handpiece holder
<b>6793496</b>	X-Smart Pro+/Pro battery (rechargeable)
<b>6793512</b>	X-Smart Pro+/Pro power supply (charger and cable)
<b>6781798</b>	X-Smart Pro+ Y-connector cable
<b>6781806</b>	X-Smart Pro+ file clip, 2 pieces
<b>6781772</b>	X-Smart Pro+ lip clip, 5 pieces
<b>6779388</b>	X-Smart Pro+/Pro wireless footswitch
<b>6793538</b>	X-Smart Pro+/Pro lubrication adapter
<b>6793736</b>	X-Smart Pro+/Pro adapter for DAC universal

TREATMENT SOLUTION MOTOR KITS	
	<p><b>B 00 XSP0 W1G KIT</b></p> <p>X-Smart® Pro WaveOne® Gold AH Plus Jet® Root Canal Sealer</p>
	<p><b>B 00 XSP0 W1G KIT</b></p> <p>X-Smart® Pro+ WaveOne® Gold AH Plus Jet® Root Canal Sealer</p>
	<p><b>B 00 XSP0 PTL KIT</b></p> <p>X-Smart® Pro ProTaper Ultimate™ AH Plus Jet® Root Canal Sealer</p>
	<p><b>B 00 XSP0 PTL KIT</b></p> <p>X-Smart® Pro+ ProTaper Ultimate™ AH Plus Jet® Root Canal Sealer</p>
	<p><b>B 00 XSP0 TNO KIT</b></p> <p>X-Smart® Pro TruNatomy® AH Plus Jet® Root Canal Sealer</p>
	<p><b>B 00 XSP0 TNO KIT</b></p> <p>X-Smart® Pro+ TruNatomy® AH Plus Jet® Root Canal Sealer</p>
	<p><b>B 00 XSP0 RCB KIT</b></p> <p>X-Smart® Pro RECIPROC® Blue AH Plus Jet® Root Canal Sealer</p>
	<p><b>B 00 XSP0 RCB KIT</b></p> <p>X-Smart® Pro+ RECIPROC® Blue AH Plus Jet® Root Canal Sealer</p>

\*\*Products may not be available in all markets.